

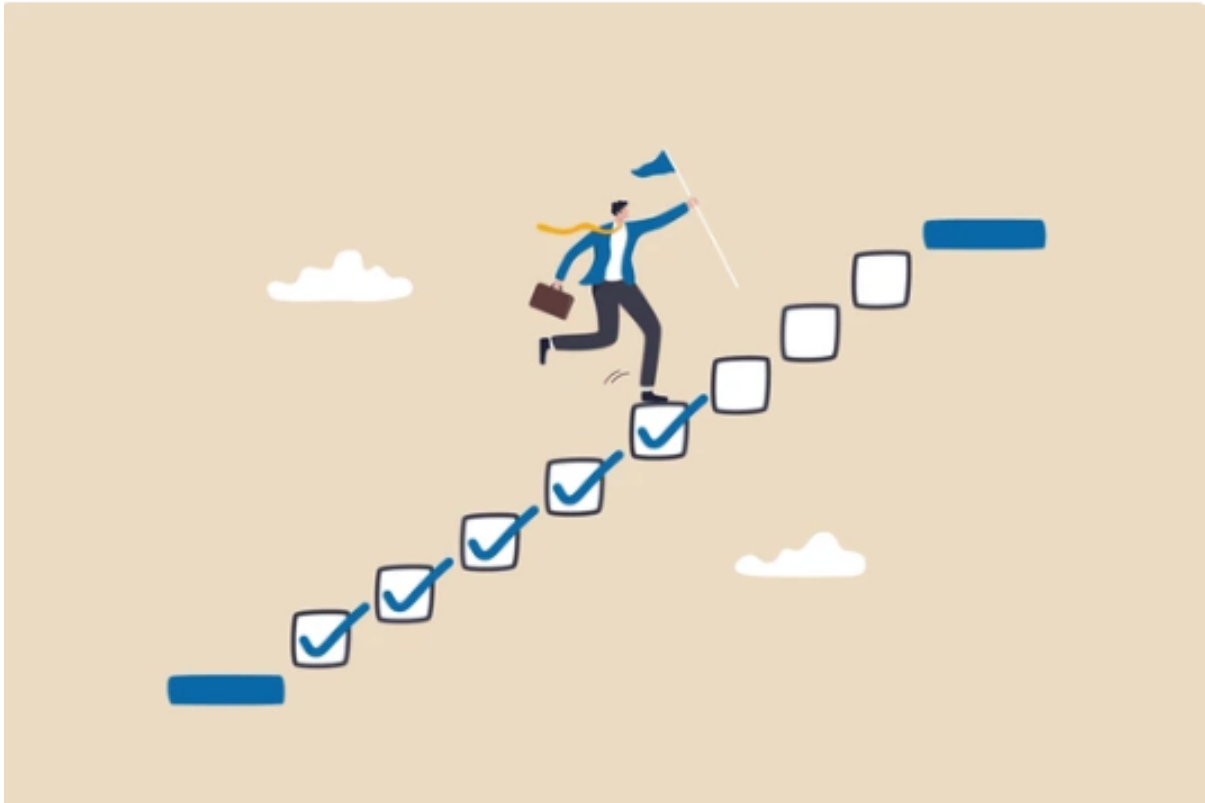
FAIRiCUBE Newsletter #6

“ *Deliver the power of data cubes and ML to decision makers and data scientists* ”

Final review and end of project

As we approach the end of September, the FAIRiCUBE project officially draws to a close: in October, we will undergo our final project review! Over the past years, we've worked together to explore how cubes of complex data can be transformed into actionable, FAIR resources that support science, industry, and society. But while the project itself concludes this month, our work is not quite finished. Even as FAIRiCUBE wraps up, the resources developed during the project will remain available to the community.

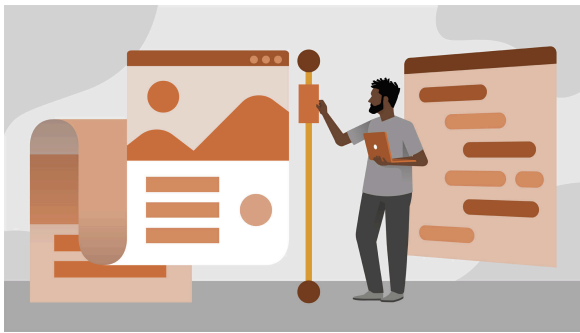
[Read more](#)



FAIRiCUBE stays alive

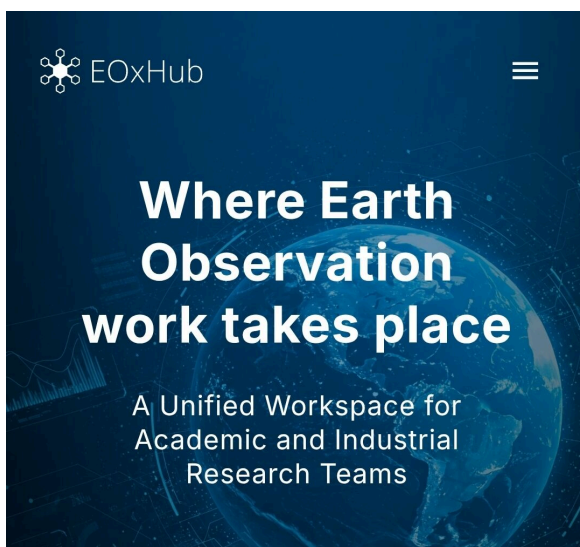
Even as FAIRiCUBE concludes, its insights and resources will continue to benefit the community. The new [SAGE](#) project and its sister initiatives will build on the joint [policy brief](#), which underscores the importance of environmental data for the European Green Deal and offers recommendations for the Green Deal Data Space. The following resources remain available:

- ✓ [FAIRiCUBE Hub](#): The central entry point to FAIRiCUBE tools, demonstrators, and datasets.
- ✓ [FAIRiCUBE Digital Library](#): A comprehensive collection of documentation, guidelines, and tutorials
- ✓ [Use Case Contributions](#): FAIRiCUBE's use cases have been central in demonstrating how FAIR data principles can be applied in real-world contexts.
- ✓ [Data and Models on GitHub](#): Many of the models, workflows, and tools developed during FAIRiCUBE have been published openly on GitHub.
- ✓ [Zenodo](#): FAIRiCUBE project deliverables remain accessible for download also directly from our [website](#)!



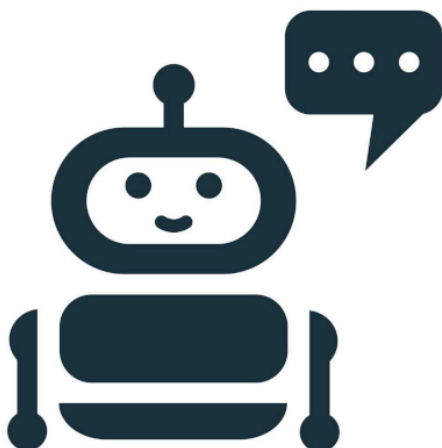
Storytelling in maps

At FAIRiCUBE, we believe that science should not only be accurate, but also accessible and engaging. To make complex information more intuitive for non-technical audience, we created storytelling around the work of our Use Cases!

[Read more](#)

The Next Generation of EOxHub Workspaces

FAIRiCUBE has been at the forefront of making Earth Observation (EO) data more accessible, interoperable, and impactful for researchers and practitioners. A big part of this mission is powered by EOxHub Workspaces .

[Read more](#)

Knowledge Base has upgraded Chatbot

The FAIRiCUBE Knowledge Base, accessible through the FAIRiCUBE Hub, has rolled out an upgraded version of its intelligent assistant — the FAIRiCUBE Chatbot — featuring a refreshed design and enhanced capabilities.

[Read more](#)



FAIRiCUBE Publications

Would you like to read more about the insights we gained during the FAIRiCUBE project? The website shows an overview of all the publications made during the project.

[Read more](#)

nilu

 **WAGENINGEN**
UNIVERSITY & RESEARCH

EOX

naturhistorisches
museum wien

phm

rasdaman
raster data manager

 **4sfera**
INNOVA

space **4** environment

EPSILON
Italia

CONSTRUCTOR
UNIVERSITY



Funded by
the European Union

| [Contact](#) | [Disclaimer](#) | [Privacy](#) | [Unsubscribe](#) |